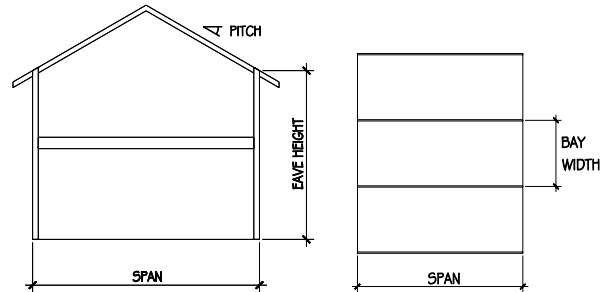
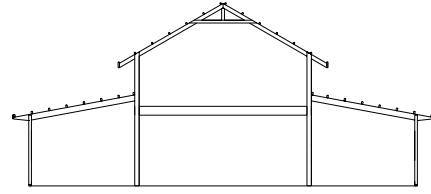


ecoBarnStudio

Adaptable rigid frame building system designed for a range of applications including dwelling, studio, retail or combination workshop garage and storage.

FEATURES

- Simple bolt together framework
- Fully engineered to meet the structural requirements of the Building Code of Australia
- Termite protected, Hyspan H2's laminated veneer lumber frame.
- Manufactured from Australian grown radiata pine - a renewable resource, retrieving carbon from the atmosphere for the life of the structure.



Standard Dimensions

	span	bay widths	eave height	roof pitch
ecoBarnStudio	6.0m	2.4m	4.6m	30°



Standard Module: 7.2m x 6.0m = 40m² upper floor and 43m² ground floor area

ADVANTAGES

- No measuring, no cutting, no cranes or other specialist equipment required
- Wind loading to N3 classification catered for
- Build on a concrete slab or raised platform
- Incorporate dormer windows, verandah or lean to extensions
- Clad walls with colorbond metal sheeting, utilityClad© plywood, straw bale, or mud brick
- Insulate and line walls and ceilings according to requirements.

BENEFITS FOR OUR ENVIRONMENT

ecoBarn designed and manufactured in Australia from Australian grown radiata pine - a totally renewable resource, retrieving carbon from the atmosphere and storing for the life of the structure.

Contribute positively to a reduction in greenhouse gas emissions, build with **ecoBarn** instead of other high carbon release materials



ecoBarn
Not just a shed



For enquiries contact Timberbuilt Pty Ltd

Telephone: (03) 9543 3733
 Facsimilie: (03) 9543 3766
 Email: ecobarn@timberbuilt.com.au
 Web: www.timberbuilt.com.au/ecobarn.htm

Physical Address:
 58A Whiteside Rd
 Clayton
 Victoria 3169

Postal Address:
 PO Box 1181
 Clayton South BC
 Victoria 3169